

FALL
WINTER
22/23

SU
PRE
ME
WOMEN
& MEN

THE SUPREME GROUP BY MUNICH FASHION COMPANY

INFO@THESUPREMEGROUP.DE · WWW.THESUPREMEGROUP.DE

DÜSSELDORF
28 JAN – 31 JAN 2022

B1 / BENNINGSENPLATZ 1

SUPREME
WOMEN&MEN

SHOWROOMS FOR LUXURY
WOMEN'S AND MENSWEAR



THE SUPREME GROUP
KENNZEICHNET AB SOFORT
NACHHALTIGE LABELS MIT
DIESEM ICON. DIESES ICON
FINDEN SIE IM AUSSTELLERINDEX
HINTER DEN JEWEILIGEN BRANDS
UND AGENTUREN.

ALINE MÜLLER-SCHADE,
GESCHÄFTSLEITUNG DER
THE SUPREME GROUP:

„Nachhaltigkeit ist sicher in der
Modebranche ein dehnbarer
Begriff. Aber jeder, der sich in
seinen Prozessen - sei es in der
Produktion, im Design oder
Versand diesem Thema annimmt,
leistet seinen Beitrag, was wir
sehr schätzen und was wir
sichtbar machen möchten“.

THE SUPREME GROUP NOW LABELS
SUSTAINABLE LABELS WITH THIS
ICON. YOU CAN FIND THIS ICON IN
THE EXHIBITOR INDEX BEHIND THE
RESPECTIVE BRANDS AND
AGENCIES.

ALINE MÜLLER-SCHADE,
EXECUTIVE DIRECTOR OF
THE SUPREME GROUP:

"Sustainability is certainly a flexible
term in the fashion industry. But
everyone who is involved in its
processes - be it in production,
design or dispatch - is aware of the
importance of sustainability and is
making its contribution, which we
appreciate very much and which we
want to make visible".

O · A

22 FASHION GMBH

FLOOR 3 · 3A17
LINDWURMSTR. 177 · 80337 MÜNCHEN · DE
T +49(0)89 720 165 79
MAIL@22-FASHION.COM · WWW.22-FASHION.COM
COLLECTIONS UNBREAK.IT, CASHIMAR

A.M.A SRL

FLOOR 4 · 4D00
VIA B.FRANKLIN 7 · 41012 CARPI · IT
T +39(0)59644278
LUCIANAFAZIO@AMA-PURE.COM
COLLECTIONS AMA PURE

ADRIANO BARONI SRL

FLOOR 3 · 3A29
VIA E.COSIMINI, 8/N · 51018 PIEVE A NIEVOLE,PT · IT
T +39(0)393 3409836
INFO@ADRIANOBARONI.IT · WWW.ADRIANOBARONI.IT
COLLECTIONS ADRIANO BARONI

AGENTUR LENZ

FLOOR 3 · 3D09
WIENERSTR. 94 · 8605 KAPFENBERG · AT
T +43(0)3862 264 16
AGENTUR.LENZ@AON.AT
COLLECTIONS ARTICO, SUPREMA

AGENTUR TOEPFER

FLOOR 4 · PRIVATE SHOWROOM
BENNIGSEN PLATZ 1 · 40474 DÜSSELDORF · DE
T +49(0) 211 1306 360
OFFICE@AGENTUR-TOEPFER.COM · WWW.AGENTUR-TOEPFER.COM
COLLECTIONS AMOUR, BLISSKER, ERIKA CAVALLINI, FALIERO SARTI,
FCASHMERE, FIVE, GMS - 75, HAIKURE, LABO.ART, LOST IN ME, PHISIQUE
DU ROLE, PT TORINO, SEMI COUTURE, SIYU, T-JACKET, ULTRA LOW LUXE

A

AGORA GROUP

FLOOR 2 · 2B13

1-3 ARISTOTELOUS STR. 55 · 55133 KALAMARIA · GR

T +30(0)6948245030

FANIS@AGORALEATHER.GR · WWW.AGORALEATHER.GR

COLLECTIONS AGORA

ALMA SRL

FLOOR 3 · 3A27

VIA DEL LAVORO, 2 · 31030 BREDA DI PIAVE (TV) · IT

T +39(0)422 600 122

INFO@ALMA-KNIT.IT · WWW.MARYAKNITWEAR.COM

COLLECTIONS MARYA

APPLE OF EDEN TRADING, UNIP, LDA.

FLOOR 2 · 2A11

RUA DA CASTANHEIRA Nº24 · 4650-365 FELGUEIRAS · PT

T +351(0)255 146 542

MARKETING@APPLEOFEDEN.PT · WWW.APPLEOFEDENSHOES.COM

COLLECTIONS APPLE OF EDEN

ARTICO SNC

FLOOR 3 · 3D11

VIA RISORGIMENTO 22 · 40010 SALA BOLOGNESE (BO) · IT

T +39(0)51 828 266

ARTICO@ARTICOSNC.IT · WWW.ARTICOSNC.IT

COLLECTIONS ARTICO

KRYSTALL - SOAMAS | ARYA

FLOOR 2 · 2B04

KÖLNSTR. 1 / HAUS DER MODE 1 / ROOM 10 · 11 EG · 65760 ESCHBORN

· DE

T +49(0) 6196 998380

INFO@KRYSTALL-SOAMAS.COM · WWW.KRYSTALL-SOAMAS.COM

COLLECTIONS KRYSTALL - SOAMAS

B

B.M. -FASHION-VERTRIEB 

FLOOR 3 · 3C05

ROBERT-BOSCH-STR. 2 · 44629 HERNE · DE

T +49(0) 2323 9586 0

INFO@BM-COMPANY.DE · WWW.BM-COMPANY.DE

COLLECTIONS B.M.-COMPANY, MODE MANUFATUR BISPING

LASALLE AMSTERDAM 

FLOOR 3 · 3D03

ZEKERINGSTRAAT 34 · 1014 BS AMSTERDAM · NL

T +31(0)621878773

ART@BARNETT-BARNETT.COM · WWW.LASALLE-FASHION.COM

COLLECTIONS LASALLE AMSTERDAM

MANIA, BEHR
SCHUHVERTRIEBSGESELLSCHAFT

FLOOR 3 · 3D09

KAISER STR. 33 A · 6370 REITH/KITZBÜHEL · AT

T +43(0) 5356 74790

OFFICE@HANS-BEHR-SHOES.COM · WWW.MANIA-SHOES.COM

COLLECTIONS MANIA, THIERRY RABOTIN, AZURÉE, EXETER

BELTS SRL

FLOOR 3 · 3A23

VIA PRAMPOLINI 36 · 43044 LEMIGNANO DICOLECCHIO PARMA · IT

T +39(0)0521 804421

INFO@BELTS-PARMA.IT · WWW.BELTS-PARMA.IT

COLLECTIONS BELTS+DI PIAZZA STEFANO

BONNIE

FLOOR 4 · 4A07

HEILBRONNER STR. 326 · 70469 STUTTGART · DE

T +49(0)711 387868

INFO@BONNIE.DE · WWW.BONNIE.DE

COLLECTIONS BONNIE

B · C

BORGHETTI & BÜLOW 

FLOOR 3 · 3C07
 PARKSTRASSE 23 · 80339 MÜNCHEN · DE
 T +49(0) 89 3408090
 OFFICE@BORGHETTI-BUELOW.DE · WWW.BORGHETTI-BUELOW.DE
COLLECTIONS BORGHETTI & BÜLOW, DEL CARMINE, DINIZ & CRUZ,
 NORWEGIAN WOOL, MARINI, RICHARD GRAND, STEFAN BRANDT

MISS JUNE

FLOOR 2 · 2B06
 9 RUE D ABOUKIR · 75002 PARIS · FR
 T +31 (0)6 22423739
 OFFICE@JUST-EVE.DE · WWW.JUST-EVE.DE
COLLECTIONS MISS JUNE

BRUNATE

FLOOR 2 · 2A05
 VIA DEL SEPRIO 54 · 22074 LOMAZZO · IT
 T +49(0)89 218960-37
 DEUTSCHLAND@BRUNATE.IT · WWW.BRUNATE.IT
COLLECTIONS BRUNATE

CALZATURIFICIO DOVER S.R.L. -

FLOOR 2 · 2A13
 VIA W. TOBAGI, 4 · 56022 CASTELFRANCO DI SOTTO (PISA) · IT
 T +39(0)571 480277
 MATILDE@DOVER.IT · WWW.ARCOBALENOCOLLECTIONS.COM
COLLECTIONS ANDIAFORA, PATRIZIA BONFANTI

**CALZATURIFICIO EMMEGIEMME
SHOES SRL**

FLOOR 2 · 2B02
 STRADA STATALE 275, KM 22.950 · 73030 SURANO (LE) · IT
 T +39(0)836 9367 59
 SALVATORE.GNONI@MGMSHOES.COM · WWW.MAIMAI.IT
COLLECTIONS MAIMAI

C

CARELLA S.R.L. 

FLOOR 2 · 2A07
 VIA ROMA 90 · 31050 MIANE (TV) · IT
 T +39(0)345 4596186
 AMMINISTRAZIONE@CARELLA.EU · WWW.TONET.EU
COLLECTIONS TONET

CHILANGO MARA ZILLGENS

FLOOR 2 · 2B01
 MARTIN-LUTHER-STR. 25 · 42781 HAAN · DE
 T +49(0)2129 95 80 60
 STEFAN.ZILLGENS@T-ONLINE.DE · WWW.CHILANGO.EU
COLLECTIONS CHILANGO

**CHRISTOPH FUNK ZUM STORCHEN
GMBH & CO.KG**

FLOOR 4 · 4A05
 ASPACHSTR. 2 · 88400 BIBERACH · DE
 T +49(0)7351 1504 0
 INFO@FUNK-COLLECTION.COM · WWW.FUNK-COLLECTION.COM
COLLECTIONS FUNK SINCE 1776

**CIARLI & NICOLA IAMMARRONE &
FRANCESCA BASILE**

FLOOR 2 · 2A15
 STADTGARTENSTR. 25 · 67071 LUDWIGSHAFEN · DE
 T +49(0)178 852151
 INFO@IAMMARRONE.COM · WWW.IAMMARRONE.COM
COLLECTIONS GIANLUCA PISATI

CLAUSTYLER

FLOOR 3 · 3D01
 MOTZSTR. 52 · 10777 BERLIN · DE
 T +43(0) 67637 52 622
 PHILIPP@CLAUSTYLER.COM · WWW.CLAUSTYLER.COM
COLLECTIONS CLAUS TYLER

C

CONFABI S.R.L.

FLOOR 3 · 3A03

VIA M.BUONARROTTI 1 · 26865 SAN ROCCO AL PORTO (LO) · IT
 T +39(0)33 7756018
 EXPORT@CONFABI.COM
 WWW.MA-ESTA.IT · WWW.BLANCALUZMILANO.IT
COLLECTIONS BLANCA LUZ;MAESTA

CONFEZIONI PANGO SPA 

FLOOR 3 · 3A05

VIA BRESCIA 52 · 25020 BASSANO BRESCIANO (BS) · IT
 T +39(0)30 9932011
 CARLO.SECCA@PANGO.IT · WWW.PANGO.IT
COLLECTIONS GAIA LIFE

CPL HELLAS S.A. 

FLOOR 2 · 2B09

ATH. STRAKALI STR. 1760 · 50300 SIATISTA · GR
 T +30(0)24650 221 91
 YS@Y-STILTZ.DE · WWW.CPLFURS.COM
COLLECTIONS CPL 1953

**OPIFICIO MODENESE BY CREA-SI SAS
DI TREVISANI MARIA E C.** 

FLOOR 4 · 4D13

VIA PLATONE 10 · 41012 CARPI (MO) · IT
 T +39(0)59 672376
 INFO@OPIFICIOMODENESE.COM · WWW.OPIFICIOMODENESE.COM
COLLECTIONS OPIFICIO MODENESE

CUTE STUFF 

FLOOR 2 · 2B15

KASTANIENALLEE 3 · 82335 BERG · DE
 T +49(0) 8151 97133 91
 A.GUSHURST@CUTESTUFF.DE · WWW.CUTESTUFF.DE
COLLECTIONS CUTE STUFF

D · E

DAY BIRGER MIKKELSEN A/S

FLOOR 4 · 4C09

JENS KOFODS STREET 1, 3 · 1268 COPENHAGEN · DK
 T +45(0)33458800
 MILLE.BANGERT@DAY.DK · WWW.DAY.DK
COLLECTIONS DAY BIRGER ET MIKKELSEN, 2ND DAY

DIEBRA TEXTIL GMBH

FLOOR 2 · 2C05

OSTERWALD STR. 10 · 80895 MÜNCHEN · DE
 T +49 (0)89 364230
 A.DIETL@DIEBRA-FASHION.DE · WWW.DIEBRA-FASHION.COM
COLLECTIONS MEME, AU SOLEIL DE ST. TROPEZ, CONNER & BLAKE,
 TEMPTATION POSITANO, MADDAM, KITTED IN CASHMERE, SWORD,
 CAMICETTA SNOB, THE ABITO, PEARL & CAVIAR, TAJ, SIMEON FARRAR,
 GLOX, ONE, BE FLORENCE, DUCA CONTEDINI, AML, SOLLECITI,
 VIOLANTI, DASSIOS, ZAMATTIO, ESTER, DUCIE, SUNDAY ST.TROPEZ,
 SKEMO, BLOKK

DONNE DA SOGNO S.R.L

FLOOR 3 · 3A25

VIA LAGO SANTO N. 38 · 41012 CARPI (MO) · IT
 T +39(0)59 688173
 INFO@DONNEDASOGNO.IT · WWW.DONNEDASOGNO.IT
COLLECTIONS DONNE DA SOGNO

DREAM CATCHER

FLOOR 2 · 2B19

VITOSHA BLVD,44 · 1000 SOFIA · BG
 T +32(0)475225123
 SALES@RTD.BG · WWW.DREAMCATCHEROFFICIAL.COM
COLLECTIONS DREAM CATCHER

**E. MÜLLER
TEXTILVERTRIEBS GMBH**

FLOOR 4 · 4D12

THELENKAMP 65 · 41169 MÖNCHENGLADBACH · DE
 T +49(0)173 3858419
 OFFICE@ELLITOUJOURS.DE · WWW.ELLITOUJOURS.DE
COLLECTIONS ELLI, HARBOR BERLIN

E · F

ELLEN PAULSSEN HÜTE E.K. 

FLOOR 2 · 2B08

GOTTFRIEDSTRASSE 16 · 52062 AACHEN · DE

T +49(0)241 54999

OFFICE@ELLENPAULSSEN.DE · WWW.ELLENPAULSSEN.DE

COLLECTIONS ELLEN PAULSSEN

F.E.A. SRL

FLOOR 3 · 3A11

STRADA DELLE FRATTE 3B · 6132 PERUGIA · IT

T +39(0)3355847666

INFO@INUKLOOK.IT · WWW.INUKBRAND.COM

COLLECTIONS INUK

MAIDEN LANE, FASHION CONCEPTS
BY STOUT B.V.

FLOOR 3 · 3D02

HOOFDSTRAAT 85 · 3474 JB ZEGVELD · NL

T +31(0) 624438 656

MARJAN@FASHION-CONCEPTS.NL · WWW.MAIDENLANE.EU

COLLECTIONS MAIDEN LANE

FASHION HOLDING DÜSSELDORF

FLOOR 4 · 4C01

FELDSTRASSE 4 · 44867 BOCHUM · DE

T +49(0) 172 5293533

SERVICE@FHD.AGENCY · WWW.JNBY.EU

COLLECTIONS JNBY, CROQUIS BY JNBY

FASHION STYLING LICHER E.K.

FLOOR 2 · 2A01

HEIDEMANNSTR. 31 - 41 · 80939 MÜNCHEN · DE

T +49 (0)89 360 38110

GRUBER@HERRLICHER.COM · WWW.HERRLICHER.COM

COLLECTIONS HERRLICHER

F · G

FERRONE SPA

FLOOR 3 · 3A17

VIA BERGAMINI 69 · 141 ROMA · IT

T +39(0)3389448370

COMMERCIALE@SANDROFERRONE.IT · WWW.SANDROFERRONE.IT

COLLECTIONS SANDRO FERRONE, LOLA BY SANDRO FERRONE

FLIP DISTRIBUTION

FLOOR 2 · 2B05

FENDSTR. 7 · 80802 MÜNCHEN · DE

T +49(0) 89 344259

OFFICE@FLIPDISTRIBUTION.DE · WWW.FLIPMUNICHSTYLE.COM

COLLECTIONS MOLLI OLLI, MINNIE ROSE, RYY RUBY YAYA AUSTRALIEN,
LEATHERROCKBRETONIERE GERMANY 

FLOOR 4 · 4D15

ALTENAWEG 20G · 5145 PC WAALWIJK · NL

T +31(0) 737620600

THERESA@BRETONIERE.COM · WWW.FREDELABRETONIERE.COM

COLLECTIONS FRED DE LA BRETONIERE, SHABBIES AMSTERDAM

FURRY OG

FLOOR 4 · 4C03

LANGACKERGASSE 15/2/2 · 1190 WIEN · AT

T +43(0)1 39965 71

FURRY.VIENNA@GMAIL.COM

COLLECTIONS FURRY

GEORG MAIER 1954

FLOOR 3 · 3D06

MARIANNE-PLEHN-STR.49 · 81825 MÜNCHEN · DE

T +49(0)174 2023094

SILVIA.WEIDENEDER@FREUNET.DE · WWW.GEORG-MAIER.DE

COLLECTIONS GEORG MAIER 1954

G · H · I · J

GOLLÉHAUG GMBH

FLOOR 2 · 2A19
 EMIL-MAYER-STR. 35 · 72461 ALBSTADT · DE
 T +49(0)7432/97920
 S.MERZ@GOLLEHAUG.DE · WWW.GOLLEHAUG.DE
COLLECTIONS GOLLÉHAUG, YOURCONCEPT

GOTTSEIDANK GMBH & CO.KG

FLOOR 4 · 4C13
 SCHLEISSHEIMERSTRASSE 273 · 80809 MÜNCHEN · DE
 T +49(0)89 3589991813
 INFO@GOTTSEIDANK.COM · WWW.GOTTSEIDANK.COM
COLLECTIONS HITTENKOFER

HEINZ GÜNTHER LUBERT

FLOOR 3 · 3C09
 BONNERSTRASSE 278 · 50968 KÖLN · DE
 T +49 (0)221 385060
 INFO@LUBERT-KOELN.DE · WWW.LUBERT-KOELN.DE
COLLECTIONS LUBERT DE COLOGNE, VISIONE

JUFFROUW JANSEN

FLOOR 2 · 2A03
 HOOGOORDDREEF 71B · 1101 BB AMSTERDAM · NL
 T +31(0)20 7371066
 SALES@JUFFROUWJANSEN.COM · WWW.JUFFROUWJANSEN.COM
COLLECTIONS JUFFROUW JANSEN

ITALIAN FASHION AGENCY

FLOOR 3 · 3A03
 GALLERIA S. BABILA, 4/C · 20122 MAILAND · IT
 T +39(0)3495722540
 RAFFA.VEDA@GMAIL.COM · WWW.ITALIANFASHIONAGENCY.COM
COLLECTIONS ADRIANO BARONI, ALMA, BELTS, CICUTA, CLAUDIA
 FIRENZE, DONNE DA SOGNA, GAIA LIFE, INUK, MARINI SILVANO,
 MULIERIBUS

K · L

KASSUBA
VERTRIEBSGESELLSCHAFT-MBH

FLOOR 3 · 3A15
 SCHÖNBUCHSTR. 28B · 70771 LEINENFELDEN-ECHTERDINGEN · DE
 T +49(0) 711 1605 50
 KASSUBA@KASSUBA.DE · WWW.KASSUBA.DE
COLLECTIONS KASSUBA VERTRIEB, AIDA BARNI, EMANUELE MAFFEIS

KIPPER EXPORT S.L.

FLOOR 4 · 4D08
 PTDA. ALZABARES ALTO, P.1-17 · 3290 ELCHE · ES
 T +34(0)966655015
 AVJAENKIPPER@KMBSHOES.ES · WWW.KMBSHOES.ES
COLLECTIONS KMB, ANN KURZ

KLS TRADING GMBH

FLOOR 4 · 4C11
 ETTLINGER STR. 43 · 75210 KELTERN · DE
 T +49(0)7236 982878
 CLAUDIA@KLS-TRADING.DE · WWW.CHEEKYCHAIN.COM
COLLECTIONS CHEEKY CHAIN MUNICH

LABEKA

FLOOR 3 · 3C15
 MOOSSTRASSE 50 · 96052 BAMBERG · DE
 T +49 (0) 171 802 93 91
 INFO@LABEKA.DE · WWW.LABEKA.DE
COLLECTIONS LABEKA

LODENFREY GMBH

FLOOR 3 · 3C13
 LINDAUSTR. 28 · 4820 BAD ISCHL · AT
 T +43 (0) 6132 203
 PETER_FREY@T-ONLINE.DE · WWW.LODENFREY.AT
COLLECTIONS LODEN FREY, RESI HAMMERER, MÜNCHENER
 LODENFABRIK, TOFANA

M

HERESIS

FLOOR 3 · 3A01
 VIA CHIANCARO, 19 ZONA INDUSTRIALE
 74015 MARTINA FRANCE (TA) · IT
 T +39(0)80 4302406
 HERESIS@HERESIS.IT · WWW.HERESIS.IT
COLLECTIONS HERESIS

MAGLIESSENZA SRL

FLOOR 3 · 3A09
 VIA POLA ESTERNA 4 INT.6 · 41012 CARPI · IT
 T +39(0)59 6550492
 MAGLIESSENZA@GMAIL.COM · WWW.CITUASTYLE.COM
COLLECTIONS CICUTA

MAGLIFICIO FAGOTTO S.A.S DI
FAGOTTO PIETRO EC.

FLOOR 3 · 3A19
 VIA SANTA LUCIA, 192 · 1010 PIAN SANTO · IT
 T +39(0)761450224
 MULIERIBUS.AMMINISTRAZIONE@GMAIL.COM · WWW.MULIERIBUS.IT
COLLECTIONS MULIERIBUS, MAGLIFICIO FAGOTTO

MANSERTEXTIL AG 

FLOOR 2 · 2B12
 THURGAUERSTR. 117,TMC, SR 114 · 8152 GLATTPARK · CH
 T +41(0)44829 2175
 INFO@FRATELLIM.CH · WWW.FRATELLIM.CH
COLLECTIONS FRATELLI M

MANTRA SRL

FLOOR 4 · 4D06
 VIA ANDREA DORIA,56 · 20124 MILANO · IT
 T +39(0)338 6263504
 INFO@6ARKIMEDE.COM · WWW.6ARKIMEDE.COM
COLLECTIONS FABIO RUSCONI, STOKTON, BRV BY ANGELO BERVICATO,
 BRECOS, PANCHIC

M

MARINI SILAVNO SRL

FLOOR 3 · 3A07
 VIA SOLE, 10/A · 63835 MONTAPPONE FM · IT
 T +39(0)7347 60437
 INFO@MARINISILVANO.COM · WWW.MARINISILVANO.COM
COLLECTIONS MARINI SILVANO

MARTINI SRL

FLOOR 4 · 4D02
 VIALE DI PORTA SANT'ANGELO 14 · 5100 TRENTO · IT
 T +39(0)7444 26741
 INFO@MARTINISRL.EU · WWW.BRANACASHMERE.IT
COLLECTIONS BARNA CASHMERE

MAXMARA GMBH 

FLOOR 2 · 2D01
 HEINRICH-KLEY-STRASSE 6 · 80807 MÜNCHEN · DE
 T +49(0)89 3504960
 KARWATZKI.K@MAXMARA.DE · WWW.MAXMARA.COM
COLLECTIONS MAX MARA LEISURE, MARELLA, PENNY BLACK, EMME

MCA & CO MODEAGENTUR

FLOOR 2 · 2A17
 SCHLOSSSTRASSE 9 · 35619 BRAUNFELS · DE
 T +49(0) 171 1766300
 INFO@MCAUNDCO.DE · WWW.MCAUNDCO.DE
COLLECTIONS COSTER COPENHAGEN, PHILIP HOG, AYBI

MINIBAG
KATHI GOLDSCHIEDER GMBH 

FLOOR 4 · 4D04
 WÄHRINGERSTRASSE 51/6 · 1090 WIEN · AT
 T +43(0)664 116 1718
 INFO@MINIBAG.COM · WWW.MINIBAG.COM
COLLECTIONS MINIBAG

M · N · O · P

MISS GOODLIFE
FASHION GMBH & CO. KG

FLOOR 2 · 2B03
 FROHMESTRASSE 121 · 22459 HAMBURG · DE
 T +49(0)40 84 201 520
 STEFAN.NABER@MISS-GOODLIFE.DE · WWW.MISS-GOODLIFE.DE
COLLECTIONS MISS GOODLIFE

MODEAGENTUR DIETL

FLOOR 2 · 2C03
 OSTERWALDSTR. 10, HAUS B EINGANG 8 · 80805 MÜNCHEN · DE
 T +49 (0)89 94384906
 MAIL@MODEAGENTUR-DIETL.DE · WWW.MODEAGENTUR-DIETL.DE
COLLECTIONS HER SHIRT, HER DRESS, LA CAMICIA

MODEAGENTUR DIETMAR KRAUSE

FLOOR 2 · 2A09
 SCHWARZHAUPTSTR. 10 · 80939 MÜNCHEN · DE
 T +49(0) 171 2137331
 INFO@MEINELIEBLINGSAGENTUR.DE · WWW.MODEAGENTUR-KRAUSE.DE
COLLECTIONS DIMI, UHLALA

MODEAGENTUR H. ZIMMERMANN

FLOOR 4 · 4D11
 GRIESTERWEG 3A · 63477 MAINTAL · DE
 T +49(0) 6109 7390214
 INFO@MODEAGENTUR-MZ.DE · WWW.MODEAGENTUR-MZ.DE
COLLECTIONS BIBI LOU, LOLA CRUZ, NIRA RUBENS

PELLETTERIE CLAUDIA S.R.L

FLOOR 3 · 3A21
 VIA LISBONA, 4/C · 50065 PONTASSIEVE - FIRENZE · IT
 T +39(0)55 8367368
 COMMERCE@CLAUDIAFIRENZE.COM · WWW.CLAUDIAFIRENZE.COM
COLLECTIONS CLAUDIA FIRENZE

P · R · S

PIETAG GMBH

FLOOR 3 · 3D04
 LAUTERBADSTR. 8 · 72250 FREUDENSTADT · DE
 T +49(0)7441 914850
 OFFICE@NICOLEPIETAG.DE · WWW.NICOLEPIETAG.DE
COLLECTIONS NICOLE PIETAG

PURE CASHMERE - DOROTHEE
CHRISTOPHERS

FLOOR 4 · 4D03
 FELDBRUNNENSTR. 40 · 20148 HAMBURG · DE
 T +49(0)40 2500358
 INFO@PURE-CASHMERE.DE · WWW.PURE-CASHMERE.DE
COLLECTIONS PURE CASHMERE - DOROTHEE CHRISTOPHERS

RALF KUHN
MODEVERTRIEB GMBH 

FLOOR 2 · 2B17
 FRANKENSTR. 4 · 63839 KLEINWALLSTADT · DE
 T +49(0)171 8016714
 RALFKUHN@RKMV.DE · WWW.MIA-MAI-FASHION.DE
COLLECTIONS MIA MAI-MADE IN GERMANY

ROLF GRIESINGER
INTERNATIONALE MODE GMBH

FLOOR 2 · 2C07
 AM KOSTTOR 1 · 80331 MÜNCHEN · DE
 T +49(0) 89 33 22 44
 MARION@GRIESINGER-MODE.DE · WWW.GRIESINGER-FASHION.COM
COLLECTIONS AGENTUR ROLF GRIESINGER, LU REN CASHMERE, HANA SAN

SARAH FREISE DISTRIBUTION

FLOOR 2 · 2D02
 BURGENBLICK 4 · 61462 KÖNIGSTEIN · DE
 T +49(0)6174 9159566
 MAIL@SARAHFREISE.COM · WWW.SARAHFREISE.COM
COLLECTIONS MOISMONT, SOKO, LATINO DENIM, LEDAF

S

SCHOENFABRIEK WED. J.P. VAN BOMMEL B.V.

FLOOR 4 · 4D07

OISTERWIJKSEWEG 40 · 5066 ZG MOERGESTEL · NL

T +31(0)13 51 36 900

RAPHAELBERNARD@VANBOMMEL.COM · WWW.FLORISVANBOMMEL.COM

COLLECTIONS FLORIS VAN BOMMEL

SELECT STUDIO GMBH

FLOOR 3 · PRIVATE SHOWROOM

BALANSTR 73 · 81541 MÜNCHEN · DE

T +49(0)89 125969550

INFO@SELECT-TRADING.COM · WWW.SELECT-STUDIO.COM

COLLECTIONS MARKBERG, ENVII, MUNTHE, DANTE 6, BIRGITTE HERSKIND, BY MALENE BIRGER, FREEBIRD, SIMPLE, HUMANOID, GESTUZ, CIRCUS HOTEL, 8 PM, TOMORROW, SUNCOO, A FISH NAMED FRED

SELECT STUDIO GMBH

FLOOR 3 · 3C01

BALANSTR 73 · 81541 MÜNCHEN · DE

T +49(0)89 125969550

INFO@SELECT-STUDIO.COM · WWW.SELECT-STUDIO.COM

COLLECTIONS A FISH NAMED FRED

SELECT STUDIO GMBH

FLOOR 3 · 3C03

BALANSTR 73 · 81541 MÜNCHEN · DE

T +49(0)89 125969550

INFO@SELECT-STUDIO.COM · WWW.SELECT-STUDIO.COM

COLLECTIONS DANTE 6

SHOEBIZZ GMBH

FLOOR 4 · 4D01

CHAMERSTRASSE 44 · 6331 HÜNENBERG · CH

T +41(0)794012 333

ANGELO.PFYFFER@SHOEBIZZ.CH · WWW.SHOEBIZZ.CH

COLLECTIONS VIC MATIÉ, D.A.T.E

S · T

SIMONE BRUNS

FLOOR 2 · 2C01

HEGESTRASSE 50 · 20251 HAMBURG · DE

T +49(0)40 348 61631

KONTAKT@SIMONEBRUNS.DE · WWW.SIMONEBRUNS.DE

COLLECTIONS SIMONE BRUNS, CASHMERE COUTURE

SOULKATHRINE GMBH & CO. KG

FLOOR 2 · 2B11

RIA - THIELE - STR 27 · 40549 DÜSSELDORF · DE

T +49(0)211 38854478

HELLO@SOULKATHRINE.COM · WWW.SOULKATHRINE.COM

COLLECTIONS SOUL KATHRINE

STRATEGY & DISTRIBUTION

FLOOR 2 · 2D03

VIA MAGENTA,28 · 20022 CASTANO PRIMO · IT

T +39(0)3289 1607 46

STRATEGIAEIMPRESA@GMAIL.COM · WWW.STRATEGIAEIMPRESA.EU

COLLECTIONS ALDO - ALDO, ALUXION, ALVIERO MARTINI, ARCADIA, ARDEMIA, ARGAN MEADOW, ARTICO, ATELIER, ATELIER CONTENT, BARBARA DI DAVIDE, BARRACUDA, BENEVIERRE, CAMICISSIMA, CHAOS, CHRISTINE B, CHRONOVENICE, CIMA SANDALS, COLLECTION PRIVÉ, COLORS OF CALIFORNIA, COUTÙ, DANY FASHION, DAQICONCEPT, DUCATI, FABI, FLAVIA VALENTINI, FRANCESCA BELLAVITA, GIORGETTI, GLIMMED, GREEN PROJECT ITALIA, INES DE LA FRESSANGE, INFLUENCER, IRIS SETLAKE, JAVIER MORATO, KNOMO, L'AUTRE CHOSE, LE BOTTEGHE D'ARTE, LISANZA, LORENA BENATTI, LUNA BRAND, LUNGOMARE STUDIO, MA&LO, MACIEL MOSCOVA, MANILA GRACE, MARIA BELLENTANI, MARIANO SHOES, MARINA C, MARIO VALENTINO, MOMO DESIGN, PARAFINA, PARCO DENIM, PAZ RODRIGUEZ, PEGADA, PROMISE, REGENESI, RITVA FALLA, ZUCCARI, ZUMMY

SUPREMA S.R.L

FLOOR 3 · 3D13

VIA XI FEBBRAIO, 11 · 30031 DOLO (VENEZIA) · IT

T +39(0)41 415810

LZAVAN@SUPREMASRL.COM · WWW.SUPREMLAB.COM

COLLECTIONS SUPREMA

S · T · U · V

SUSANNE BOMMER

FLOOR 4 · 4A01

HAAGERSTR. 11 · 81671 MÜNCHEN · DE

T +49(0)89 21585010

OFFICE@SUSANNEBOMMER.COM · WWW.SUSANNEBOMMER.COM

COLLECTIONS SUSANNE BOMMER

TESSILFORM VERTRIEBS GMBH

FLOOR 4 · 4C05

ST.-MARTIN-STR.61 · 81669 MÜNCHEN · DE

T +49(0)89 44488719

YVONNE.RIEKE@PATRIZIAPEPE.COM · WWW.PATRIZIAPEPE.COM

COLLECTIONS PATRIZIA PEPE

THE HOLY GOAT

FLOOR 2 · 2C09

DIEFENBACHSTRASSE 41 · 81479 MÜNCHEN · DE

T +49(0)151 58755504

MAIL@THEHOLYGOAT.COM · WWW.THEHOLYGOAT.COM

COLLECTIONS THE HOLY GOAT CASHMERE

TOM+HATTY

FLOOR 2 · 2B07

JOHANNES-MÜLLER STR. 27 · 50735 KÖLN · DE

T +49(0)221 71580600

INFO@TOMHATTY.COM · WWW.TOMHATTY.COM

COLLECTIONS HANDBRILLE BY TOM+HATTY, G-CHAIN

VON & ZU CZERNY
MANUFAKTUR GMBH

FLOOR 4 · 4A09

WEISENSTEINSTRASSE 3A · 97737 GEMÜNDEN · DE

T +49(0)9351 60421 200

CZERNY@VON-ZU.DE · WWW.VON-ZU.DE

COLLECTIONS VON & ZU

W · X · Y · Z

ZAG

FLOOR 2 · 2B10

SCHIRMER STR. 29 · 40211 DÜSSELDORF · DE

T +49(0)171 5400890

SYLVIE@WSTYLEDISTRIBUTION.COM · WWW.ZAGBIJOUX.FR

COLLECTIONS ZAG BIJOUX PARIS

WEILL SAS 

FLOOR 3 · 3D07

8 RUE LIVINGSTONE · 75018 PARIS · FR

T +33(0)678739854

VERONIKA.VORONCHAK@WEILL.FR · WWW.WEILL.COM

COLLECTIONS WEILL

XANDRES NV

FLOOR 4 · 4D09

NIJVERHEIDSTRAAT 20 · 9070 DESTELBERGEN · NL

T +49(0)151 55795161

MARTINA.POTSCHAN@XANDRES.BE · WWW.XANDRES.COM

COLLECTIONS XANDRES

YULYAFFAIRS JEWELRY

FLOOR 2 · 2B14

KRUMBADSTR. 13 · 81671 MÜNCHEN · DE

T +49(0) 89 69737190

INFO@YULYAFFAIRS.DE · WWW.YULYAFFAIRS.DE

COLLECTIONS YULYAFFAIRS

SUPREME SHOWROOMS

28 JAN - 31 JAN 2022

| COLLECTION | SHOWROOMS | NUMBER |
|-------------------------|--|------------|
| 0 | | |
| 8:00 PM | SELECT STUDIO GMBH | PRIVATE SR |
| 2ND DAY | DAY BIRGER MIKKELSEN A/S | 4C09 |
| A | | |
| A FISH NAMED FRED | SELECT STUDIO GMBH | 3C01 |
| A FISH NAMED FRED | SELECT STUDIO GMBH | PRIVATE SR |
| ADRIANO BARONI | ADRIANO BARONI SRL | 3A29 |
| ADRIANO BARONI | ITALIAN FASHION AGENCY | 3A03 |
| AGENTUR ROLF GRIESINGER | ROLF GRIESINGER INTERNATIONALE MODE GMBH | 2C07 |
| AGORA | AGORA GROUP | 2B13 |
| AIDA BARNI | KASSUBA VERTRIEBSGESELLSCHAFT-MBH | 3A15 |
| ALDO - ALDO | STRATEGY & DISTRIBUTION | 2D03 |
| ALMA | ITALIAN FASHION AGENCY | 3A03 |
| ALUXION | STRATEGY & DISTRIBUTION | 2D03 |
| ALVIERO MARTINI | STRATEGY & DISTRIBUTION | 2D03 |
| AMA PURE | A.M.A SRL | 4D00 |
| AML | DIEBRA TEXTIL GMBH | 2C05 |
| AMOUR | AGENTUR TOEPFER | PRIVATE SR |
| ANDIAFORA | CALZATURIFICIO DOVER S.R.L. - | 2A13 |
| ANN KURZ | KIPPER EXPORT S.L. | 4D08 |
| APPLE OF EDEN | APPLE OF EDEN TRADING, UNIP, LDA. | 2A11 |
| ARCADIA | STRATEGY & DISTRIBUTION | 2D03 |
| ARDEMIA | STRATEGY & DISTRIBUTION | 2D03 |
| ARGAN MEADOW | STRATEGY & DISTRIBUTION | 2D03 |
| ARTICO | AGENTUR LENZ | 3D09 |
| ARTICO | ARTICO SNC | 3D11 |
| ARTICO | STRATEGY & DISTRIBUTION | 2D03 |
| ATELIER | STRATEGY & DISTRIBUTION | 2D03 |
| ATELIER CONTENT | STRATEGY & DISTRIBUTION | 2D03 |
| AU SOLEIL DE ST. TROPEZ | DIEBRA TEXTIL GMBH | 2C05 |
| AYBI | MCA & CO MODEAGENTUR | 2A17 |
| AZURÉE | MANIA, BEHR SCHUHVERTRIEBSGESELLSCHAFT | 3D09 |
| B | | |
| B.M.-COMPANY | B.M. -FASHION-VERTRIEB | 3C05 |
| BARBARA DI DAVIDE | STRATEGY & DISTRIBUTION | 2D03 |
| BARNA CASHMERE | MARTINI SRL | 4D02 |
| BARRACUDA | STRATEGY & DISTRIBUTION | 2D03 |
| BE FLORENCE | DIEBRA TEXTIL GMBH | 2C05 |
| BELTS | ITALIAN FASHION AGENCY | 3A03 |

| COLLECTION | SHOWROOMS | NUMBER |
|-------------------------|---------------------------|------------|
| BELTS*DI PIAZZA STEFANO | BELTS SRL | 3A23 |
| BENEVIERRE | STRATEGY & DISTRIBUTION | 2D03 |
| BIBI LOU | MODEAGENTUR H. ZIMMERMANN | 4D11 |
| BIRGITTE HERSKIND | SELECT STUDIO GMBH | PRIVATE SR |
| BLANCA LUZ | CONFABI S.R.L. | 3A03 |
| BLISSKER | AGENTUR TOEPFER | PRIVATE SR |
| BLOKK | DIEBRA TEXTIL GMBH | 2C05 |
| BONNIE | BONNIE | 4A07 |
| BORGHETTI & BÜLOW | BORGHETTI & BÜLOW | 3C07 |
| BRECOS | MANTRA SRL | 4D06 |
| BRUNATE | BRUNATE | 2A05 |
| BRV BY ANGELO BERVICATO | MANTRA SRL | 4D06 |
| BY MALENE BIRGER | SELECT STUDIO GMBH | PRIVATE SR |

C

| | | |
|----------------------|----------------------------|------------|
| CAMICETTA SNOB | DIEBRA TEXTIL GMBH | 2C05 |
| CAMICISSIMA | STRATEGY & DISTRIBUTION | 2D03 |
| CASHIMAR | 22 FASHION GMBH | 3A17 |
| CASHMERE COUTURE | SIMONE BRUNS | 2C01 |
| CHAOS | STRATEGY & DISTRIBUTION | 2D03 |
| CHEEKY CHAIN MUNICH | KLS TRADING GMBH | 4C11 |
| CHILANGO | CHILANGO MARA ZILLGENS | 2B01 |
| CHRISTINE B | STRATEGY & DISTRIBUTION | 2D03 |
| CHRONOVENICE | STRATEGY & DISTRIBUTION | 2D03 |
| CICUTA | ITALIAN FASHION AGENCY | 3A03 |
| CICUTA | MAGLIESSENZA SRL | 3A09 |
| CIMA SANDALS | STRATEGY & DISTRIBUTION | 2D03 |
| CIRCUS HOTEL | SELECT STUDIO GMBH | PRIVATE SR |
| CLAUDIA FIRENZE | ITALIAN FASHION AGENCY | 3A03 |
| CLAUDIA FIRENZE | PELLETTERIE CLAUDIA S.R.L | 3A21 |
| CLAUS TYLER | CLAUS TYLER | 3D01 |
| COLLECTION PRIVÉ | STRATEGY & DISTRIBUTION | 2D03 |
| COLORS OF CALIFORNIA | STRATEGY & DISTRIBUTION | 2D03 |
| CONNER & BLAKE | DIEBRA TEXTIL GMBH | 2C05 |
| COSTER COPENHAGEN | MCA & CO MODEAGENTUR | 2A17 |
| COUÛ | STRATEGY & DISTRIBUTION | 2D03 |
| CPL 1953 | CPL HELLAS S.A. | 2B09 |
| CROQUIS BY JNBY | FASHION HOLDING DÜSSELDORF | 4C01 |
| CUTE STUFF | CUTE STUFF | 2B15 |

D

| | | |
|---------|---------------|------|
| D.A.T.E | SHOEBIZZ GMBH | 4D01 |
|---------|---------------|------|

COLLECTION SHOWROOMS NUMBER

| | | |
|-------------------------|----------------------------|------------|
| DANTE 6 | SELECT STUDIO GMBH | PRIVATE SR |
| DANTE 6 | SELECT STUDIO GMBH | 3C03 |
| DANY FASHION | STRATEGY & DISTRIBUTION | 2D03 |
| DAQICONCEPT | STRATEGY & DISTRIBUTION | 2D03 |
| DASSIOS | DIEBRA TEXTIL GMBH | 2C05 |
| DAY BIRGER ET MIKKELSEN | DAY BIRGER MIKKELSEN A/S | 4C09 |
| DEL CARMINE | BORGHETTI & BÜLOW | 3C07 |
| DIMI | MODEAGENTUR DIETMAR KRAUSE | 2A09 |
| DINIZ & CRUZ | BORGHETTI & BÜLOW | 3C07 |
| DONNE DA SOGNA | ITALIAN FASHION AGENCY | 3A03 |
| DONNE DA SOGNO | DONNE DA SOGNO S.R.L | 3A25 |
| DREAM CATCHER | DREAM CATCHER | 2B19 |
| DUCA CONTEDINI | DIEBRA TEXTIL GMBH | 2C05 |
| DUCATI | STRATEGY & DISTRIBUTION | 2D03 |
| DUCCIE | DIEBRA TEXTIL GMBH | 2C05 |

E

| | | |
|------------------|--|------------|
| ELLEN PAULSSEN | ELLEN PAULSSEN HÜTE E.K. | 2B08 |
| ELLI | E. MÜLLER TEXTILVERTRIEBS GMBH | 4D12 |
| EMANUELE MAFFEIS | KASSUBA VERTRIEBSGESELLSCHAFT-MBH | 3A15 |
| EMME | MAXMARA GMBH | 2D01 |
| ENVII | SELECT STUDIO GMBH | PRIVATE SR |
| ERIKA CAVALLINI | AGENTUR TOEPFER | PRIVATE SR |
| ESTER | DIEBRA TEXTIL GMBH | 2C05 |
| EXETER | MANIA, BEHR SCHUHVERTRIEBSGESELLSCHAFT | 3D09 |

F

| | | |
|-----------------------|--|------------|
| FABI | STRATEGY & DISTRIBUTION | 2D03 |
| FABIO RUSCONI | MANTRA SRL | 4D06 |
| FALIERO SARTI | AGENTUR TOEPFER | PRIVATE SR |
| FCASHMERE | AGENTUR TOEPFER | PRIVATE SR |
| FIVE | AGENTUR TOEPFER | PRIVATE SR |
| FLAVIA VALENTINI | STRATEGY & DISTRIBUTION | 2D03 |
| FLORIS VAN BOMMEL | SCHOENFABRIEK WED. J.P. VAN BOMMEL B.V. | 4D07 |
| FRANCESCA BELLAVITA | STRATEGY & DISTRIBUTION | 2D03 |
| FRATELLI M | MANSERTEXTIL AG | 2B12 |
| FRED DE LA BRETONIERE | BRETONIERE GERMANY | 4D15 |
| FREEBIRD | SELECT STUDIO GMBH | PRIVATE SR |
| FUNK SINCE 1776 | CHRISTOPH FUNK ZUM STORCHEN GMBH & CO.KG | 4A05 |
| FURRY | FURRY OG | 4C03 |

| COLLECTION | SHOWROOMS | NUMBER |
|----------------------|---|------------|
| G | | |
| G-CHAIN | TOM+HATTY | 2B07 |
| GAIA LIFE | CONFEZIONI PANGO SPA | 3A05 |
| GAIA LIFE | ITALIAN FASHION AGENCY | 3A03 |
| GEORG MAIER 1954 | GEORG MAIER 1954 | 3D06 |
| GESTUZ | SELECT STUDIO GMBH | PRIVATE SR |
| GIANLUCA PISATI | CIARLI & NICOLA IAMMARRONE & FRANCESCA BASILE | 2A15 |
| GIORGETTI | STRATEGY & DISTRIBUTION | 2D03 |
| GLIMMED | STRATEGY & DISTRIBUTION | 2D03 |
| GLOX | DIEBRA TEXTIL GMBH | 2C05 |
| GMS - 75 | AGENTUR TOEPFER | PRIVATE SR |
| GOLLÉHAUG | GOLLÉHAUG GMBH | 2A19 |
| GREEN PROJECT ITALIA | STRATEGY & DISTRIBUTION | 2D03 |

| | | |
|-------------------------|--|------------|
| H | | |
| HAIKURE | AGENTUR TOEPFER | PRIVATE SR |
| HANA SAN | ROLF GRIESINGER INTERNATIONALE MODE GMBH | 2C07 |
| HANDBRILLE BY TOM+HATTY | TOM+HATTY | 2B07 |
| HARBOR BERLIN | E. MÜLLER TEXTILVERTRIEBS GMBH | 4D12 |
| HER DRESS | MODEAGENTUR DIETL | 2C03 |
| HER SHIRT | MODEAGENTUR DIETL | 2C03 |
| HERESIS | HERESIS | 3A01 |
| HERRLICHER | FASHION STYLING LICHER E.K. | 2A01 |
| HITTENKOFER | GOTTSEIDANK GMBH & CO.KG | 4C13 |
| HUMANOID | SELECT STUDIO GMBH | PRIVATE SR |

| | | |
|----------------------|-------------------------|------|
| I | | |
| INES DE LA FRESSANGE | STRATEGY & DISTRIBUTION | 2D03 |
| INFLUENCER | STRATEGY & DISTRIBUTION | 2D03 |
| INUK | F.E.A. SRL | 3A11 |
| INUK | ITALIAN FASHION AGENCY | 3A03 |
| IRIS SETLAKE | STRATEGY & DISTRIBUTION | 2D03 |

| | | |
|-----------------|----------------------------|------|
| J | | |
| JAVIER MORATO | STRATEGY & DISTRIBUTION | 2D03 |
| JNBY | FASHION HOLDING DÜSSELDORF | 4C01 |
| JUFFROUW JANSEN | JUFFROUW JANSEN | 2A03 |

| | | |
|----------|--|--|
| K | | |
|----------|--|--|

| COLLECTION | SHOWROOMS | NUMBER |
|--------------------|-----------------------------------|--------|
| L | | |
| KASSUBA VERTRIEB | KASSUBA VERTRIEBSGESELLSCHAFT-MBH | 3A15 |
| KITTED IN CASHMERE | DIEBRA TEXTIL GMBH | 2C05 |
| KMB | KIPPER EXPORT S.L. | 4D08 |
| KNOMO | STRATEGY & DISTRIBUTION | 2D03 |
| KRYSTALL - SOAMAS | KRYSTALL - SOAMAS I ARYA | 2B04 |

| | | |
|------------------------|--|------------|
| L'AUTRE CHOSE | STRATEGY & DISTRIBUTION | 2D03 |
| LA CAMICIA | MODEAGENTUR DIETL | 2C03 |
| LABEKA | LABEKA | 3C15 |
| LABO.ART | AGENTUR TOEPFER | PRIVATE SR |
| LASALLE AMSTERDAM | LASALLE AMSTERDAM | 3D03 |
| LATINO DENIM | SARAH FREISE DISTRIBUTION | 2D02 |
| LE BOTTEGHE D'ARTE | STRATEGY & DISTRIBUTION | 2D03 |
| LEATHERROCK | FLIP DISTRIBUTION | 2B05 |
| LEDAF | SARAH FREISE DISTRIBUTION | 2D02 |
| LISANZA | STRATEGY & DISTRIBUTION | 2D03 |
| LODEN FREY | LODENFREY GMBH | 3C13 |
| LOLA BY SANDRO FERRONE | FERRONE SPA | 3A17 |
| LOLA CRUZ | MODEAGENTUR H. ZIMMERMANN | 4D11 |
| LORENA BENATTI | STRATEGY & DISTRIBUTION | 2D03 |
| LOST IN ME | AGENTUR TOEPFER | PRIVATE SR |
| LU REN CASHMERE | ROLF GRIESINGER INTERNATIONALE MODE GMBH | 2C07 |
| LUBERT DE COLOGNE | HEINZ GÜNTER LUBERT | 3C09 |
| LUNA BRAND | STRATEGY & DISTRIBUTION | 2D03 |
| LUNGOMARE STUDIO | STRATEGY & DISTRIBUTION | 2D03 |

| | | |
|--------------------|--|------|
| M | | |
| MA&LO | STRATEGY & DISTRIBUTION | 2D03 |
| MACIEL MOSCOVA | STRATEGY & DISTRIBUTION | 2D03 |
| MADDAM | DIEBRA TEXTIL GMBH | 2C05 |
| MAESTA | CONFABI S.R.L. | 3A03 |
| MAGLIFICIO FAGOTTO | MAGLIFICIO FAGOTTO S.A.S DI FAGOTTO PIETRO EC. | 3A19 |
| MAIDEN LANE | MAIDEN LANE, FASHION CONCEPTS BY STOUT B.V. | 3D02 |
| MAIMAI | CALZATURIFICIO EMMEGIEMME SHOES SRL | 2B02 |
| MANIA | MANIA, BEHR SCHUHVERTRIEBSGESELLSCHAFT | 3D09 |
| MANILA GRACE | STRATEGY & DISTRIBUTION | 2D03 |
| MARELLA | MAXMARA GMBH | 2D01 |
| MARIA BELLENTANI | STRATEGY & DISTRIBUTION | 2D03 |
| MARIANO SHOES | STRATEGY & DISTRIBUTION | 2D03 |
| MARINA C | STRATEGY & DISTRIBUTION | 2D03 |
| MARINI | BORGHETTI & BÜLOW | 3C07 |

| COLLECTION | SHOWROOMS | NUMBER |
|-------------------------|--|------------|
| MARINI SILVANO | ITALIAN FASHION AGENCY | 3A03 |
| MARINI SILVANO | MARINI SILVANO SRL | 3A07 |
| MARIO VALENTINO | STRATEGY & DISTRIBUTION | 2D03 |
| MARKBERG | SELECT STUDIO GMBH | PRIVATE SR |
| MARYA | ALMA SRL | 3A27 |
| MAX MARA LEISURE | MAXMARA GMBH | 2D01 |
| MEME | DIEBRA TEXTIL GMBH | 2C05 |
| MIA MAI-MADE IN GERMANY | RALF KUHN MODEVERTRIEB GMBH | 2B17 |
| MINIBAG | MINIBAG-KATHI GOLDSCHIEDER GMBH | 4D04 |
| MINNIE ROSE | FLIP DISTRIBUTION | 2B05 |
| MISS GOODLIFE | MISS GOODLIFE FASHIONGMBH & CO. KG | 2B03 |
| MISS JUNE | MISS JUNE | 2B06 |
| MODE MANUFAKTUR BISPING | B.M. -FASHION-VERTRIEB | 3C05 |
| MOISMONT | SARAH FREISE DISTRIBUTION | 2D02 |
| MOLLI OLLI | FLIP DISTRIBUTION | 2B05 |
| MOMO DESIGN | STRATEGY & DISTRIBUTION | 2D03 |
| MULIERIBUS | ITALIAN FASHION AGENCY | 3A03 |
| MULIERIBUS | MAGLIFICIO FAGOTTO S.A.S DI FAGOTTO PIETRO EC. | 3A19 |
| MÜNCHENER LODENFABRIK | LODENFREY GMBH | 3C13 |
| MUNTHE | SELECT STUDIO GMBH | PRIVATE SR |

N

| | | |
|----------------|---------------------------|------|
| NICOLE PIETAG | PIETAG GMBH | 3D04 |
| NIRA RUBENS | MODEAGENTUR H. ZIMMERMANN | 4D11 |
| NORWEGIAN WOOL | BORGHETTI & BÜLOW | 3C07 |

O

| | | |
|-------------------|--|------|
| ONE | DIEBRA TEXTIL GMBH | 2C05 |
| OPIFICIO MODENESE | OPIFICIO MODENESE BY CREA-SI SAS DI TREVISANI MARIA E C. | 4D13 |

P

| | | |
|-------------------|-------------------------------|------|
| PANCHIC | MANTRA SRL | 4D06 |
| PARAFINA | STRATEGY & DISTRIBUTION | 2D03 |
| PARCO DENIM | STRATEGY & DISTRIBUTION | 2D03 |
| PATRIZIA BONFANTI | CALZATURIFICIO DOVER S.R.L. - | 2A13 |
| PATRIZIA PEPE | TESSILFORM VERTRIEBS GMBH | 4C05 |
| PAZ RODRIGUEZ | STRATEGY & DISTRIBUTION | 2D03 |
| PEARL & CAVIAR | DIEBRA TEXTIL GMBH | 2C05 |
| PEGADA | STRATEGY & DISTRIBUTION | 2D03 |
| PENNY BLACK | MAXMARA GMBH | 2D01 |

| COLLECTION | SHOWROOMS | NUMBER |
|---------------------------------------|---------------------------------------|------------|
| PHILIP HOG | MCA & CO MODEAGENTUR | 2A17 |
| PHISIQUE DU ROLE | AGENTUR TOEPFER | PRIVATE SR |
| PROMISE | STRATEGY & DISTRIBUTION | 2D03 |
| PT TORINO | AGENTUR TOEPFER | PRIVATE SR |
| PURE CASHMERE - DOROTHEE CHRISTOPHERS | PURE CASHMERE - DOROTHEE CHRISTOPHERS | 4D03 |

R

| | | |
|------------------------|-------------------------|------|
| REGENESI | STRATEGY & DISTRIBUTION | 2D03 |
| RESI HAMMERER | LODENFREY GMBH | 3C13 |
| RICHARD GRAND | BORGHETTI & BÜLOW | 3C07 |
| RITVA FALLA | STRATEGY & DISTRIBUTION | 2D03 |
| RYY RUBYAYA AUSTRALIEN | FLIP DISTRIBUTION | 2B05 |

S

| | | |
|--------------------|----------------------------|------------|
| SANDRO FERRONE | FERRONE SPA | 3A17 |
| SEMI COUTURE | AGENTUR TOEPFER | PRIVATE SR |
| SHABBIES AMSTERDAM | BRETONIERE GERMANY | 4D15 |
| SIMEON FARRAR | DIEBRA TEXTIL GMBH | 2C05 |
| SIMONE BRUNS | SIMONE BRUNS | 2C01 |
| SIMPLE | SELECT STUDIO GMBH | PRIVATE SR |
| SIYU | AGENTUR TOEPFER | PRIVATE SR |
| SKEMO | DIEBRA TEXTIL GMBH | 2C05 |
| SOKO | SARAH FREISE DISTRIBUTION | 2D02 |
| SOLLECITI | DIEBRA TEXTIL GMBH | 2C05 |
| SOUL KATHRINE | SOULKATHRINE GMBH & CO. KG | 2B11 |
| STEFAN BRANDT | BORGHETTI & BÜLOW | 3C07 |
| STOKTON | MANTRA SRL | 4D06 |
| SUNCOO | SELECT STUDIO GMBH | PRIVATE SR |
| SUNDAY ST.TROPEZ | DIEBRA TEXTIL GMBH | 2C05 |
| SUPREMA | AGENTUR LENZ | 3D09 |
| SUPREMA | SUPREMA S.R.L | 3D13 |
| SUSANNE BOMMER | SUSANNE BOMMER | 4A01 |
| SWORD | DIEBRA TEXTIL GMBH | 2C05 |

T

| | | |
|------------------------|--------------------|------------|
| T-JACKET | AGENTUR TOEPFER | PRIVATE SR |
| TAJ | DIEBRA TEXTIL GMBH | 2C05 |
| TEMPTATION POSITANO | DIEBRA TEXTIL GMBH | 2C05 |
| THE ABITO | DIEBRA TEXTIL GMBH | 2C05 |
| THE HOLY GOAT CASHMERE | THE HOLY GOAT | 2C09 |

COLLECTION SHOWROOMS NUMBER

| | | |
|-----------------|--|------------|
| THIERRY RABOTIN | MANIA, BEHR SCHUHVERTRIEBSGESELLSCHAFT | 3D09 |
| TOFANA | LODENFREY GMBH | 3C13 |
| TOMORROW | SELECT STUDIO GMBH | PRIVATE SR |
| TONET | CARELLA S.R.L | 2A07 |

U

| | | |
|----------------|----------------------------|------------|
| UHLALA | MODEAGENTUR DIETMAR KRAUSE | 2A09 |
| ULTRA LOW LUXE | AGENTUR TOEPFER | PRIVATE SR |
| UNBREAK.IT | 22 FASHION GMBH | 3A17 |

V

| | | |
|-----------|---------------------------------|------|
| VIC MATIÈ | SHOEBIZZ GMBH | 4D01 |
| VIOLANTI | DIEBRA TEXTIL GMBH | 2C05 |
| VISIONE | HEINZ GÜNTER LUBERT | 3C09 |
| VON & ZU | VON & ZU CZERNY MANUFAKTUR GMBH | 4A09 |
| WEILL | WEILL SAS | 3D07 |

X

| | | |
|---------|------------|------|
| XANDRES | XANDRES NV | 4D09 |
|---------|------------|------|

Y

| | | |
|-------------|---------------------|------|
| YOURCONCEPT | GOLLÉHAUG GMBH | 2A19 |
| YULYAFFAIRS | YULYAFFAIRS JEWELRY | 2B14 |

Z

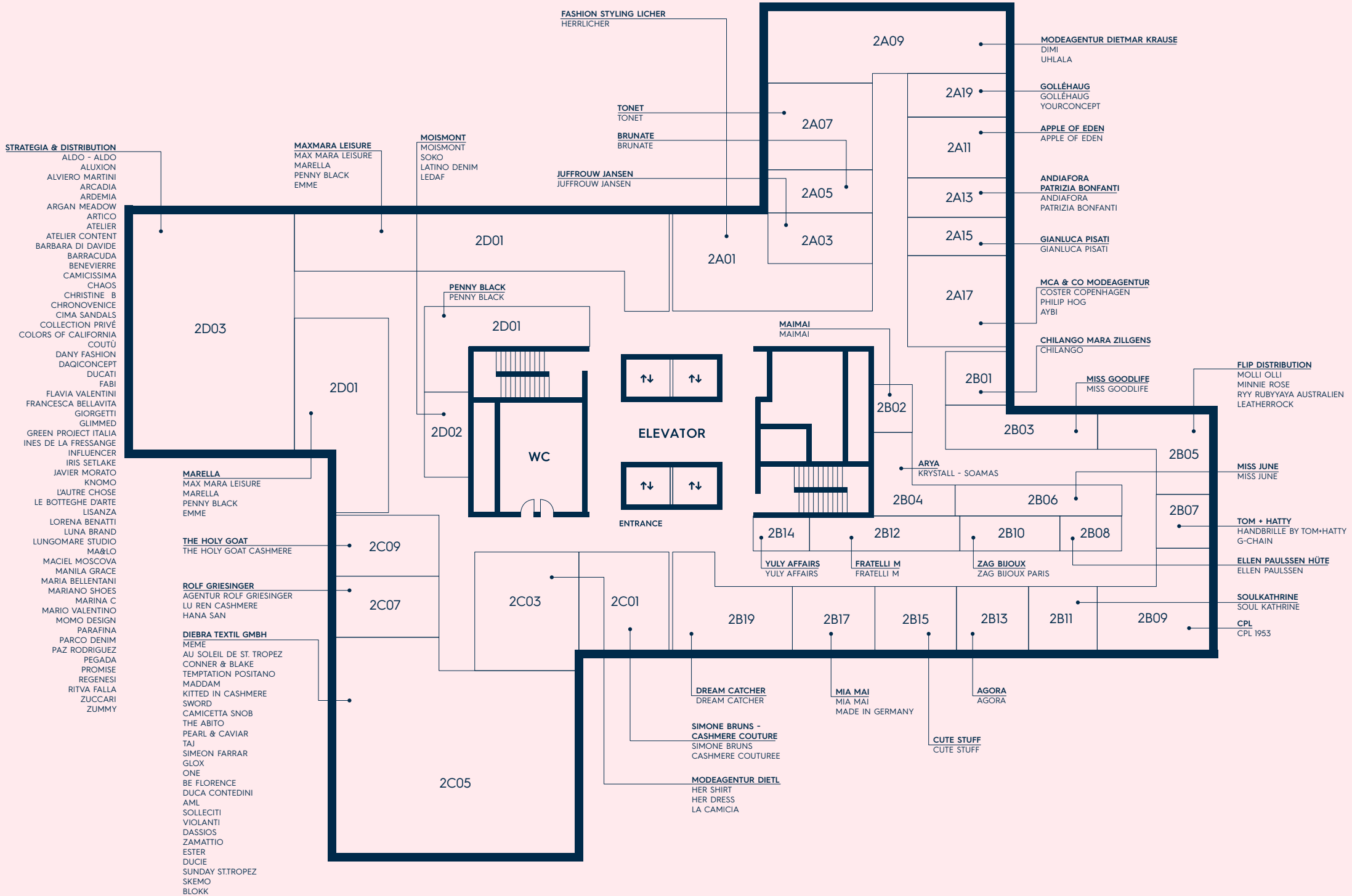
| | | |
|------------------|-------------------------|------|
| ZAG BIJOUX PARIS | ZAG | 2B10 |
| ZAMATTIO | DIEBRA TEXTIL GMBH | 2C05 |
| ZUCCARI | STRATEGY & DISTRIBUTION | 2D03 |
| ZUMMY | STRATEGY & DISTRIBUTION | 2D03 |

ETAGENPLÄNE
FLOOR PLANS

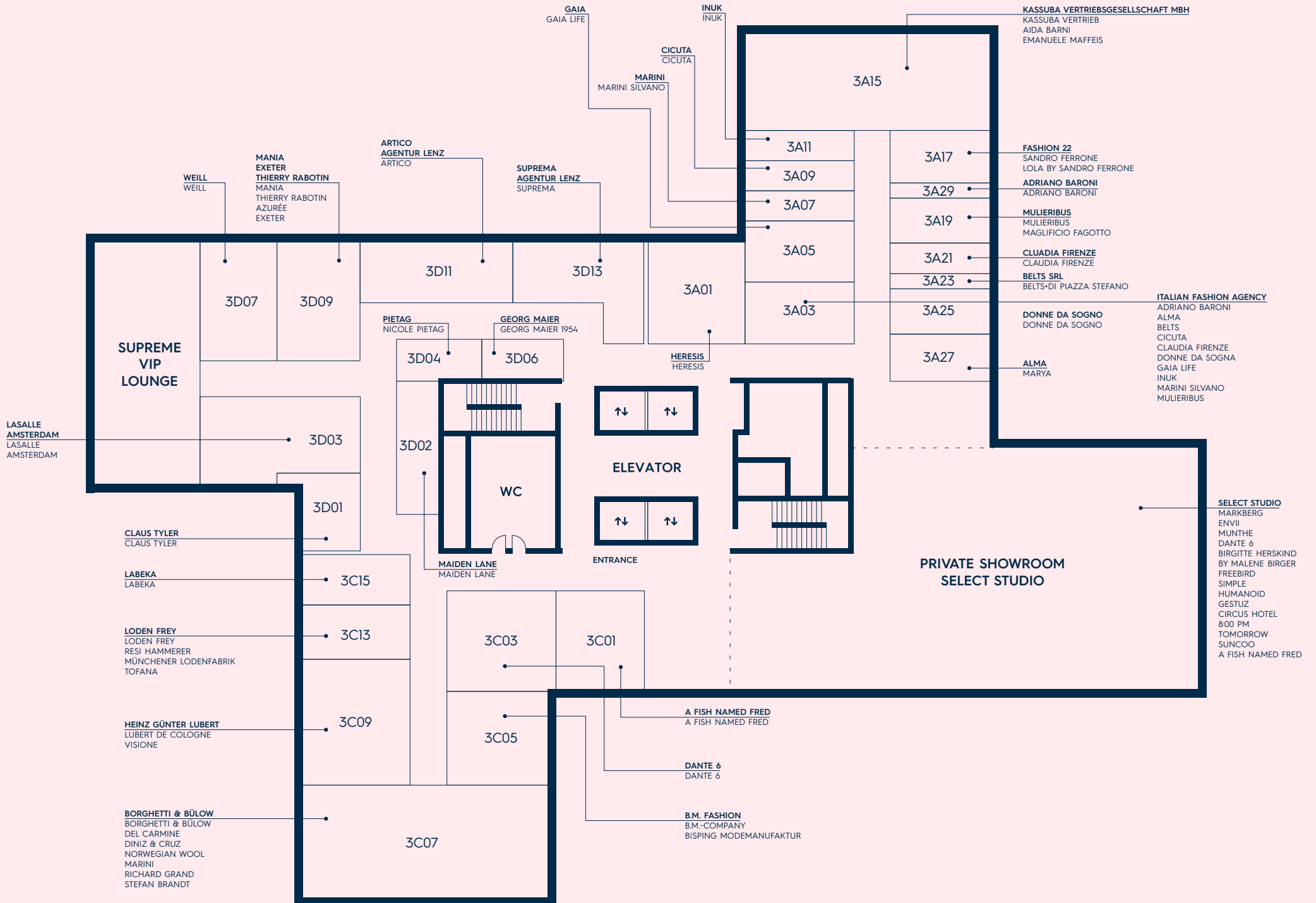
SUPREME SHOWROOMS

28 JAN - 31 JAN 2022

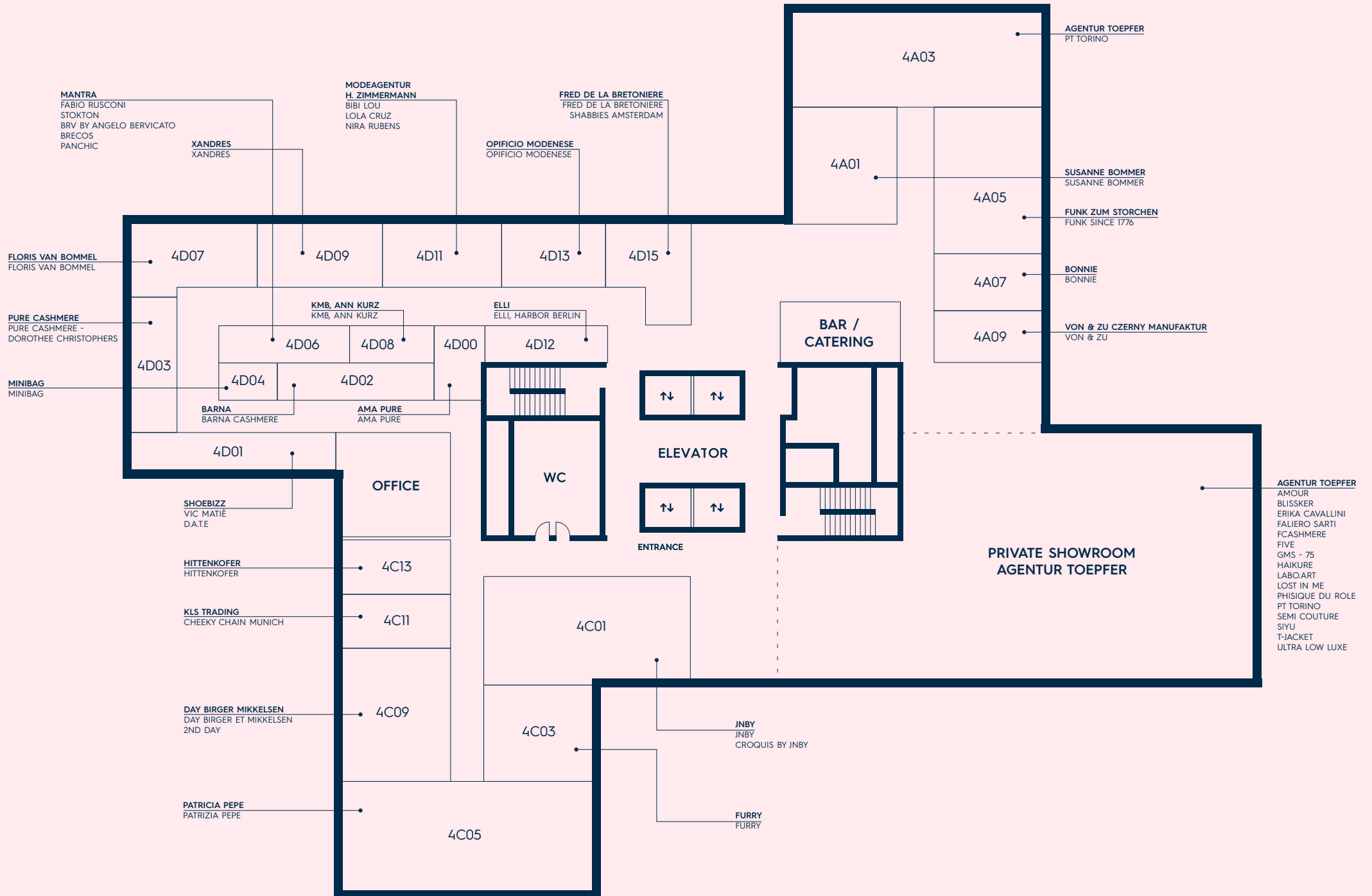
2ND FLOOR



3RD FLOOR



4TH FLOOR



IMPRESSUM

HERAUSGEBER · PUBLISHER
 THE SUPREME GROUP
 MUNICHFASHION.COMPANY GMBH
 BRETONISCHER RING 18
 85630 GRASBRUNN
 GERMANY

T +49 89 420 44 79 - 12
 F +49 89 420 44 79 - 29
 INFO@THESUPREMEGROUP.DE
 WWW.THESUPREMEGROUP.DE

GESTALTUNG · DESIGN
 DESIGNLABS GMBH
 WWW.DESIGN-LABS.EU

GESCHÄFTSFÜHRUNG · MANAGEMENT
 ALINE MÜLLER-SCHADE · CORINA KLIPPEL

ETAGENPLÄNE NICHT MASSSTABSGETREU. ALLE ANGABEN
 OHNE GEWÄHR, IRRTÜMER UND ÄNDERUNGEN VORBEHALTEN.

SUPPORTED BY

HENRI HOTELS®
EVERY DAY SHOULD BE A HENRI DAY



Neue Trends im Store-Design



TextilWirtschaft (Hrsg.)
Läden 21/22

164 Seiten, gebunden | mit zahlreichen
 Abbildungen | ISBN 978-3-86641-348-1 | 98,00 EUR

Die Redaktion der Fachzeitschrift „TextilWirtschaft“ hat erneut die 52 innovativsten und inspirierendsten Neueröffnungen und Umbauten ausgewählt und präsentiert die Stores ausführlich in Text und Bild.

Matthias Spanke
Hello, I'm your customer

184 Seiten, gebunden | mit zahlreichen
 Abbildungen | ISBN 978-3-86641-346-7 | 68,00 EUR

5 Kundengenerationen, 20 Erfolgsstrategien,
 60 Best-Practice-Beispiele aus unterschiedlichen
 Branchen: Matthias Spanke zeichnet ein klares
 Bild der wichtigsten Zielgruppen von Babyboomer
 bis zur Generation Alpha und analysiert
 deren Bedürfnisse und ihr Kaufverhalten. Vorge-
 stellt werden innovative Strategien und konkrete
 Beispiele aus aller Welt, um Kunden an Marken
 und Stores zu binden.





**SU
PRE
ME**
WOMEN
& MEN

INFO@THESUPREMEGROUP.DE
WWW.THESUPREMEGROUP.DE